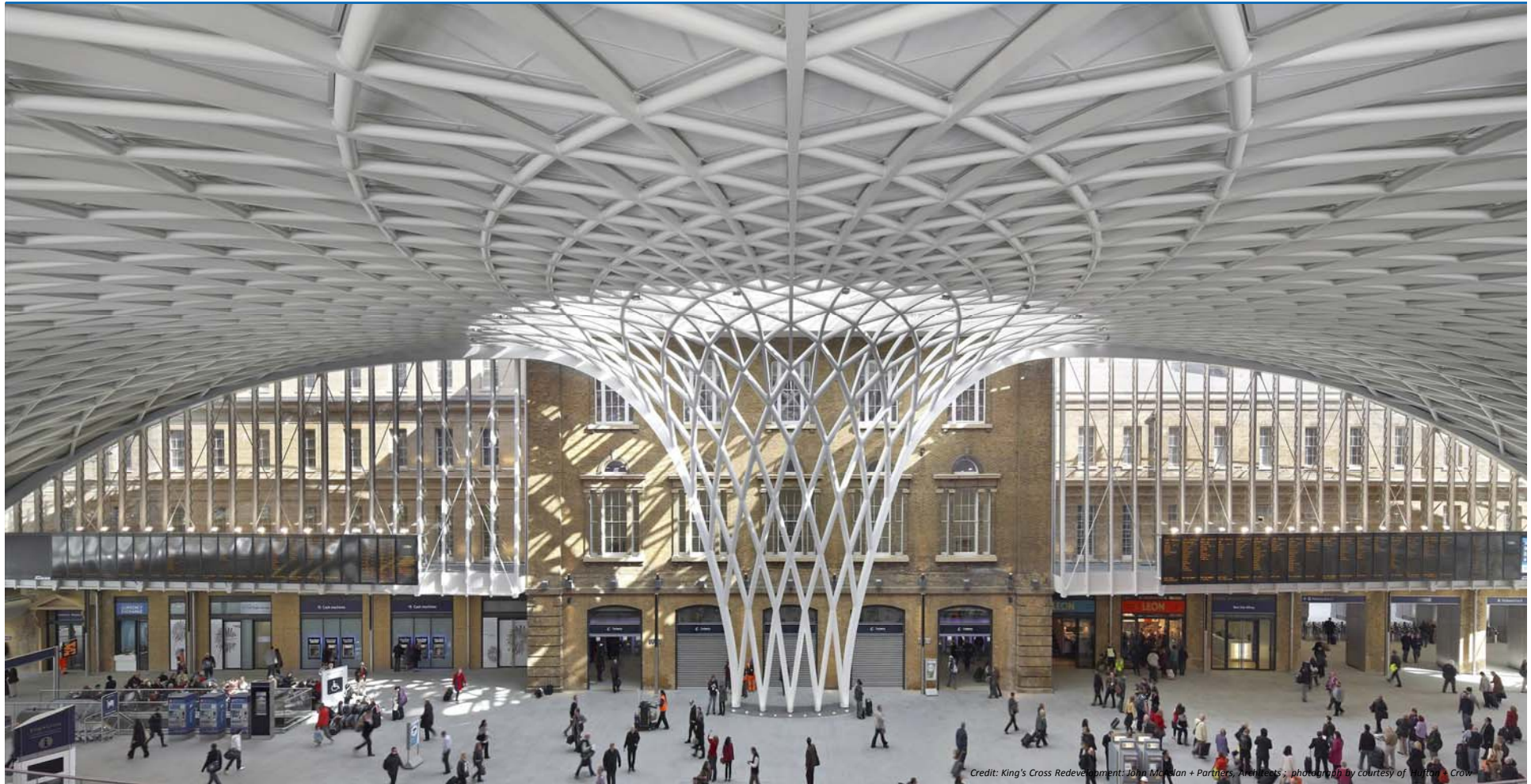


Working towards 2025



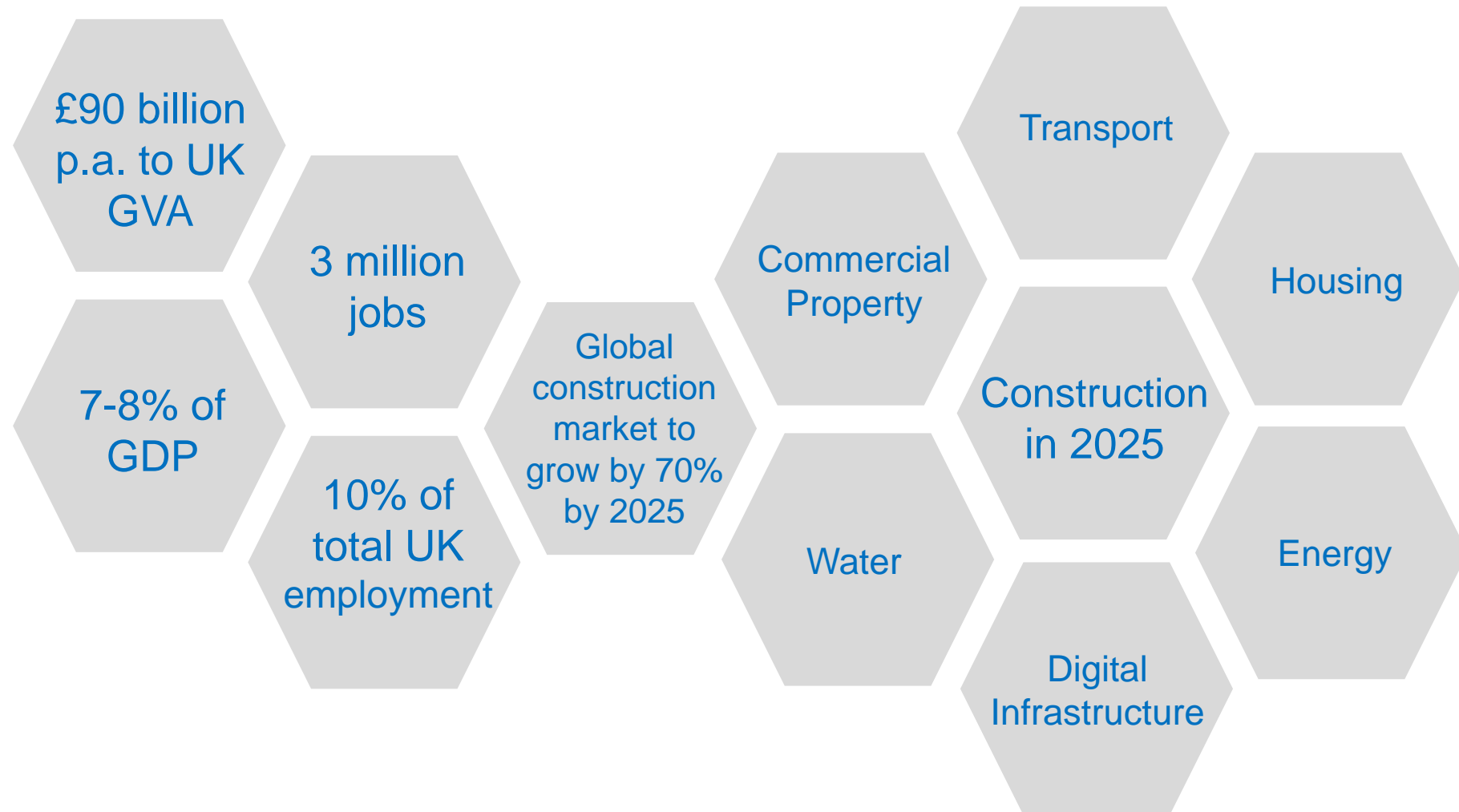
Credit: King's Cross Redevelopment: John Madigan + Partners Architects, photography by courtesy of Rufus Crow

Geosynthetics in Pavement Engineering 22 April 2015



HM Government
Chief Construction Adviser

Importance of Construction to the UK Economy



Construction at the heart of the economy



The Green Construction Board



...to deliver a construction industry fit for purpose for a low carbon future and sustainable construction



Construction 2025



...to transform
the UK
construction
industry by
2025



Construction 2025



Lower costs
33%

Faster delivery
50%

Lower emissions
50%

Improvement in exports
50%

People

Smart

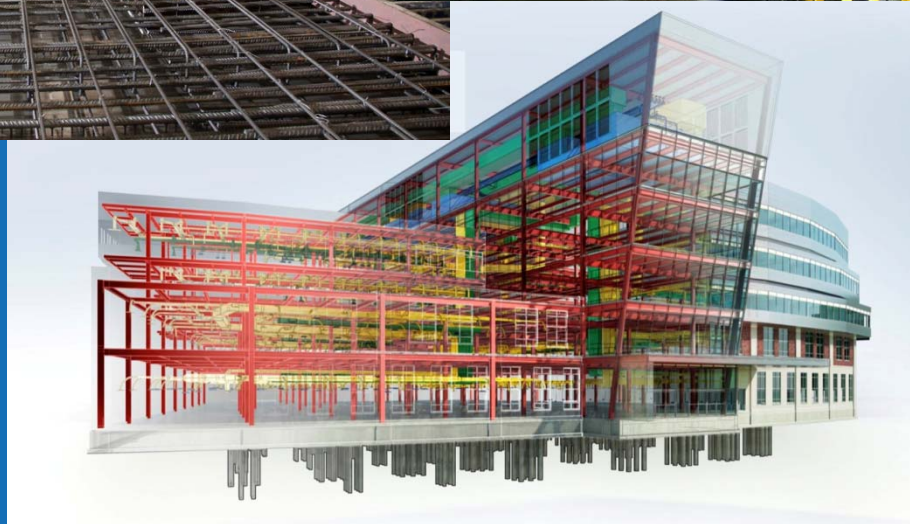
Sustainable

Growth

Leadership

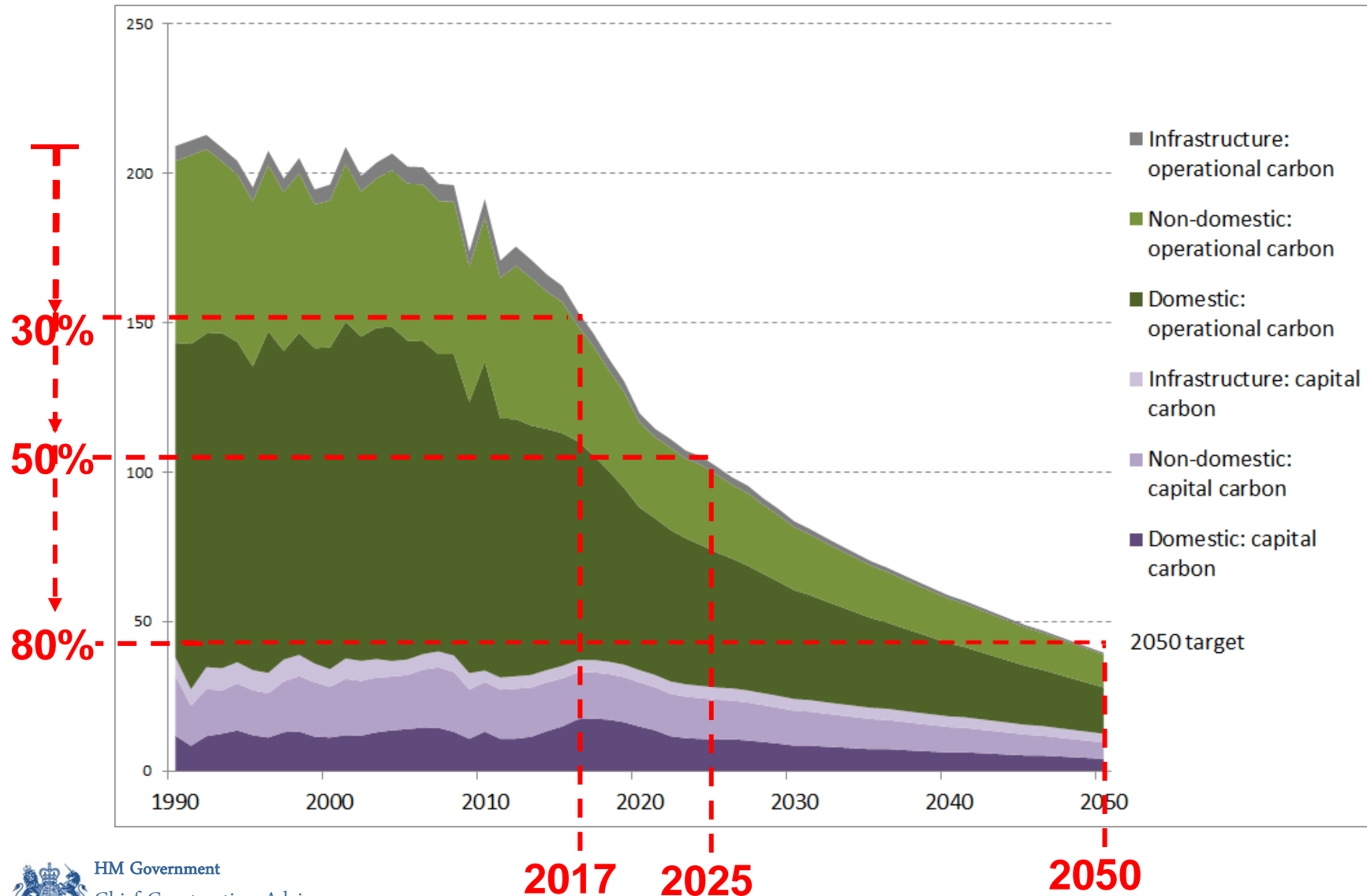


SMART - Innovation

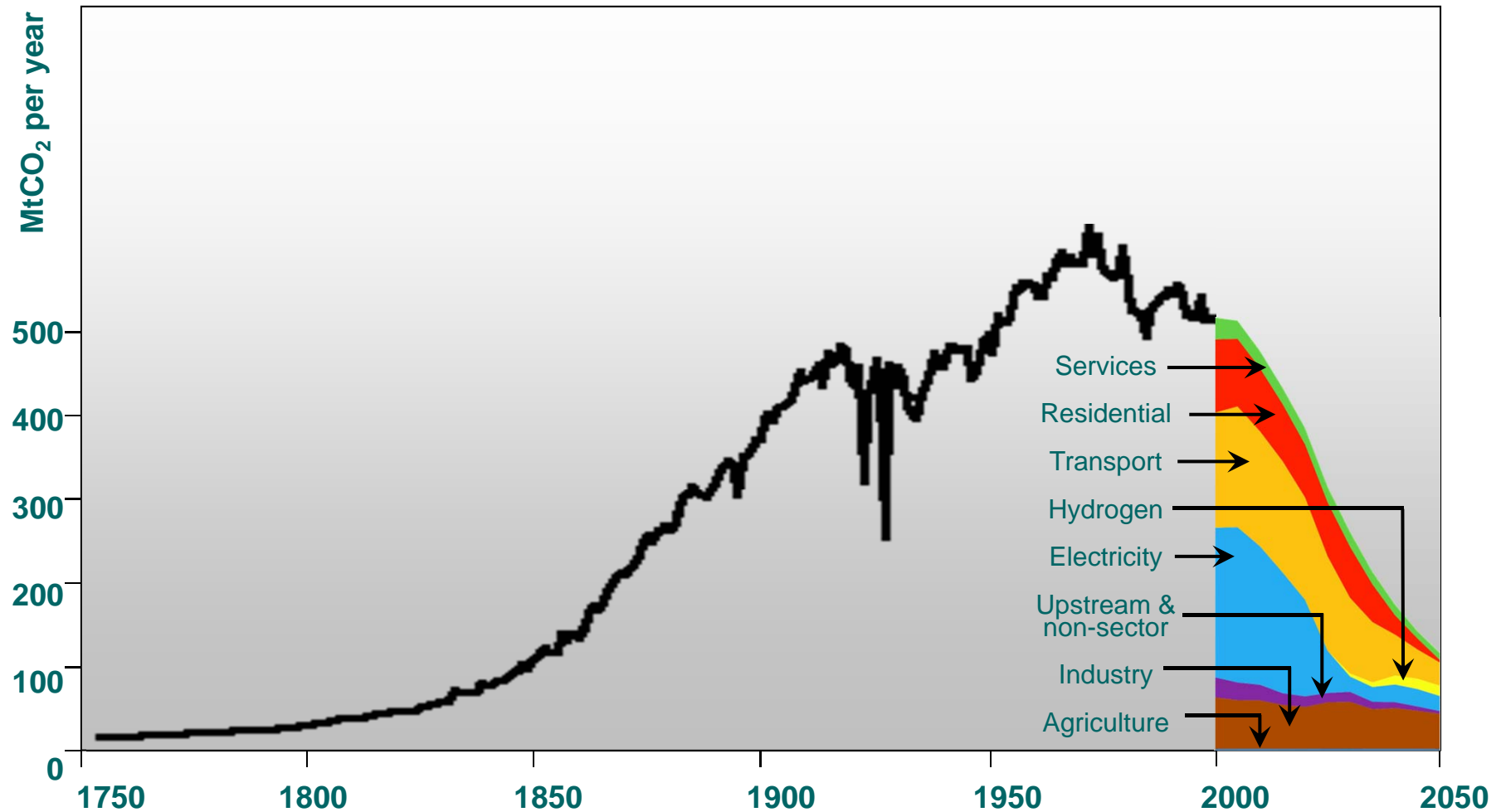


SUSTAINABLE - The Low Carbon Routemap

Built environment carbon emissions to 2050 under the 80% scenario



SUSTAINABLE - Back to the future



Source: Committee on Climate Change 2008



HM Government
Chief Construction Adviser

Contribution of Geosynthetics

- Whole-life costs
- Whole-life carbon
- Faster delivery
- Furthers the ambitions of Construction 2025

